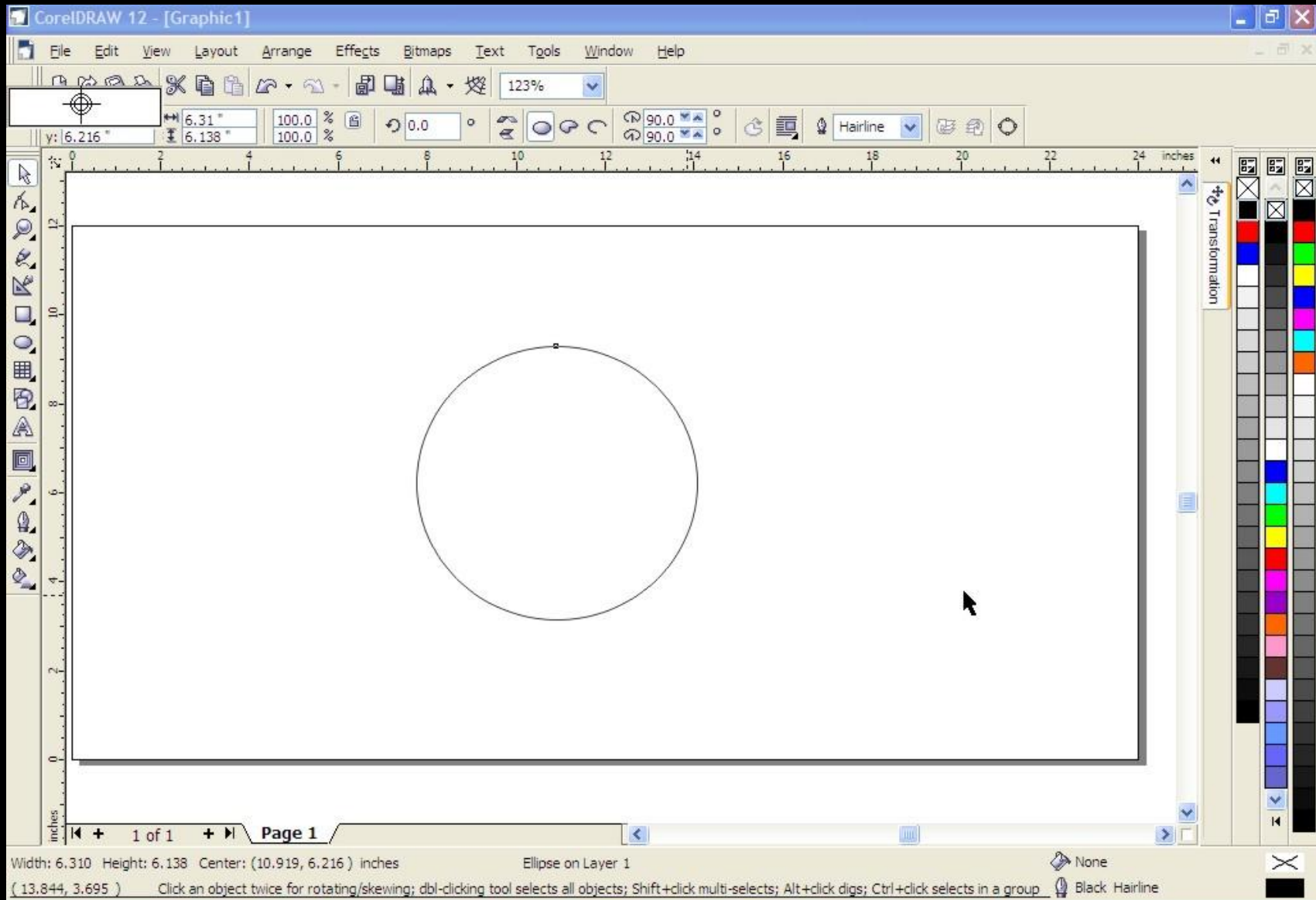
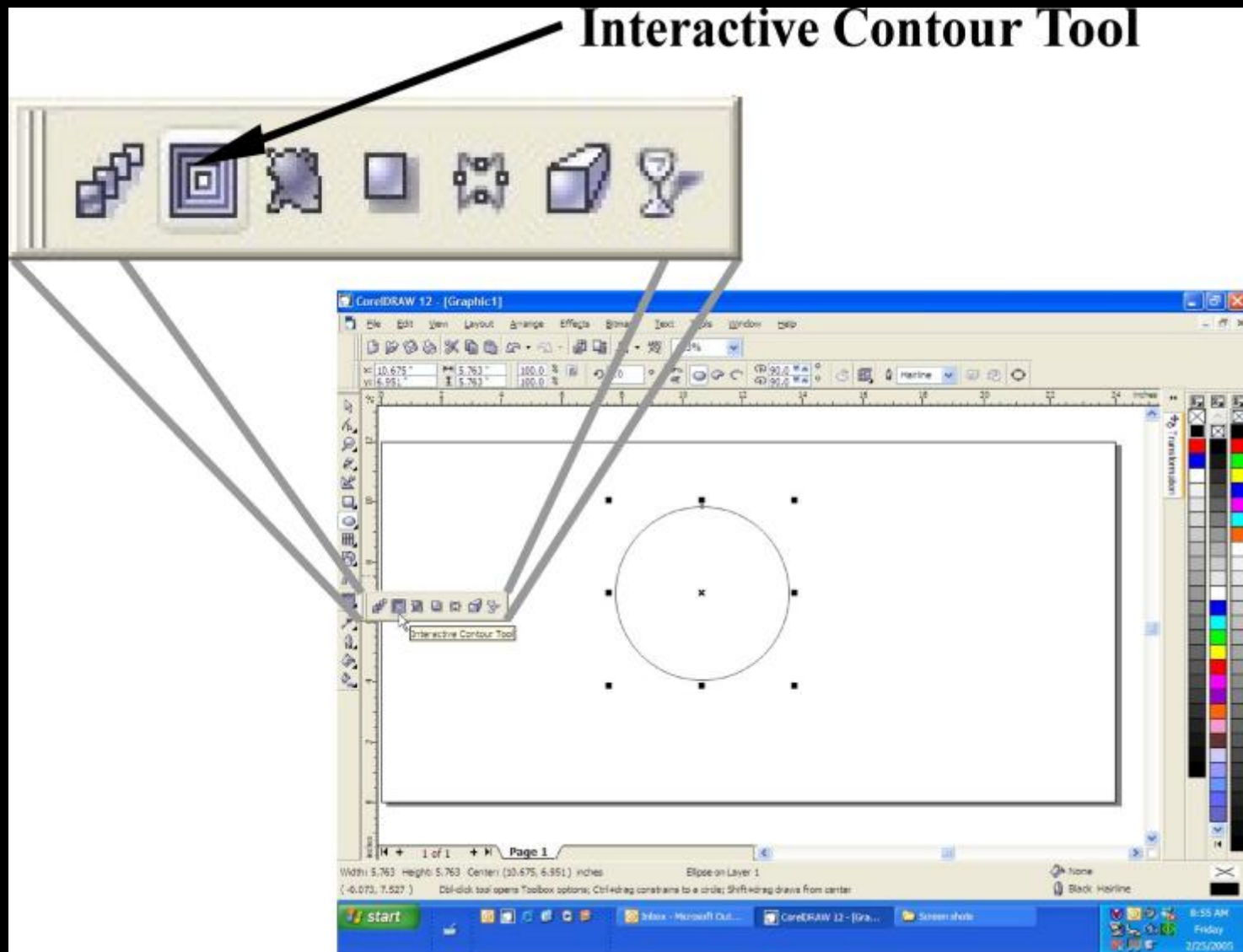


# Creating 3D in CorelDraw

# Draw or Select "Black" Outline

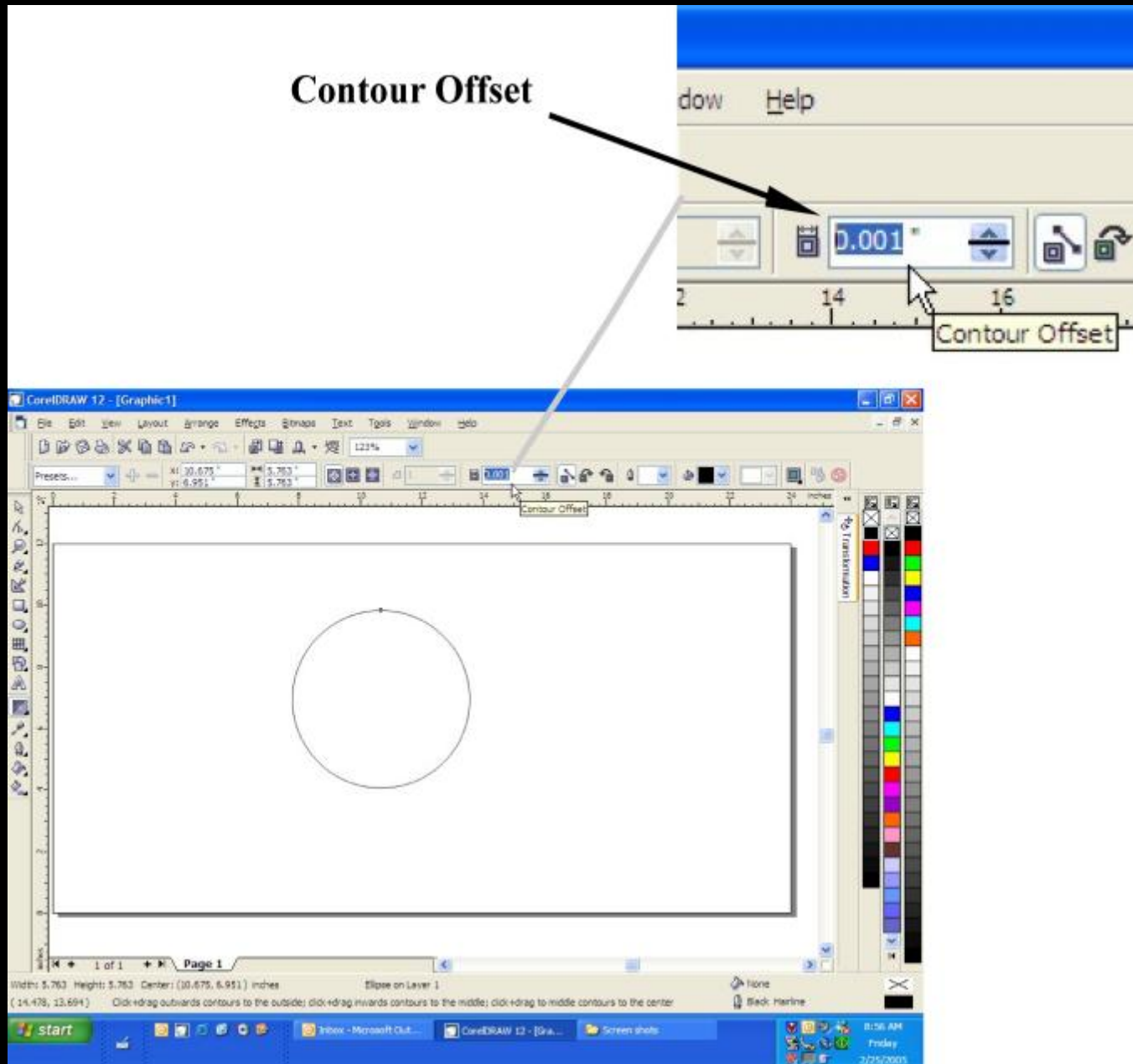


# Select “Interactive Contour Tool” with object selected



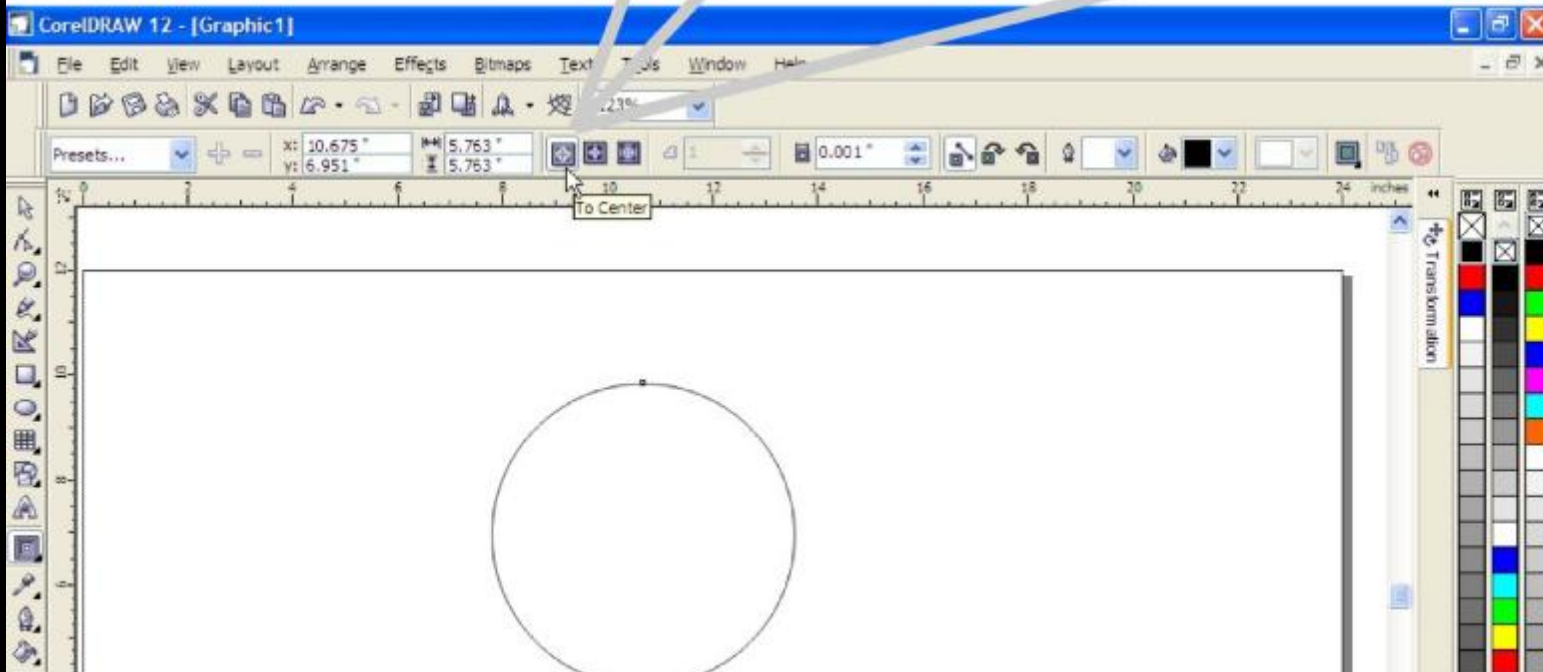
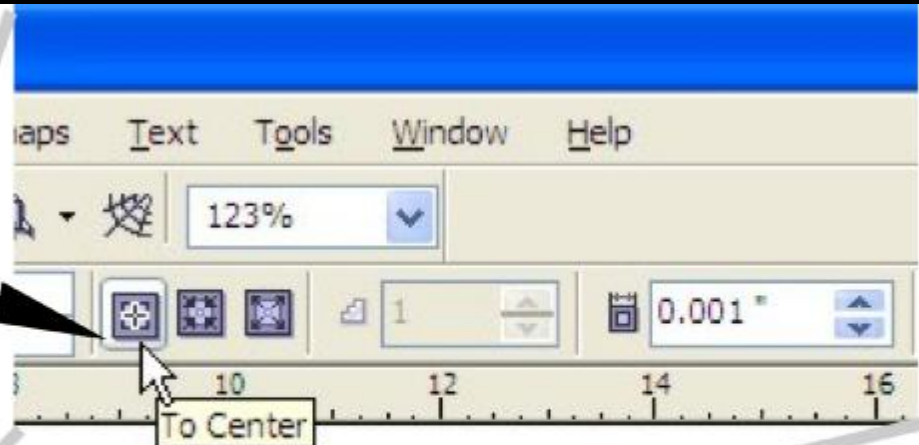


# Adjust the Contour Offset to 0.001”

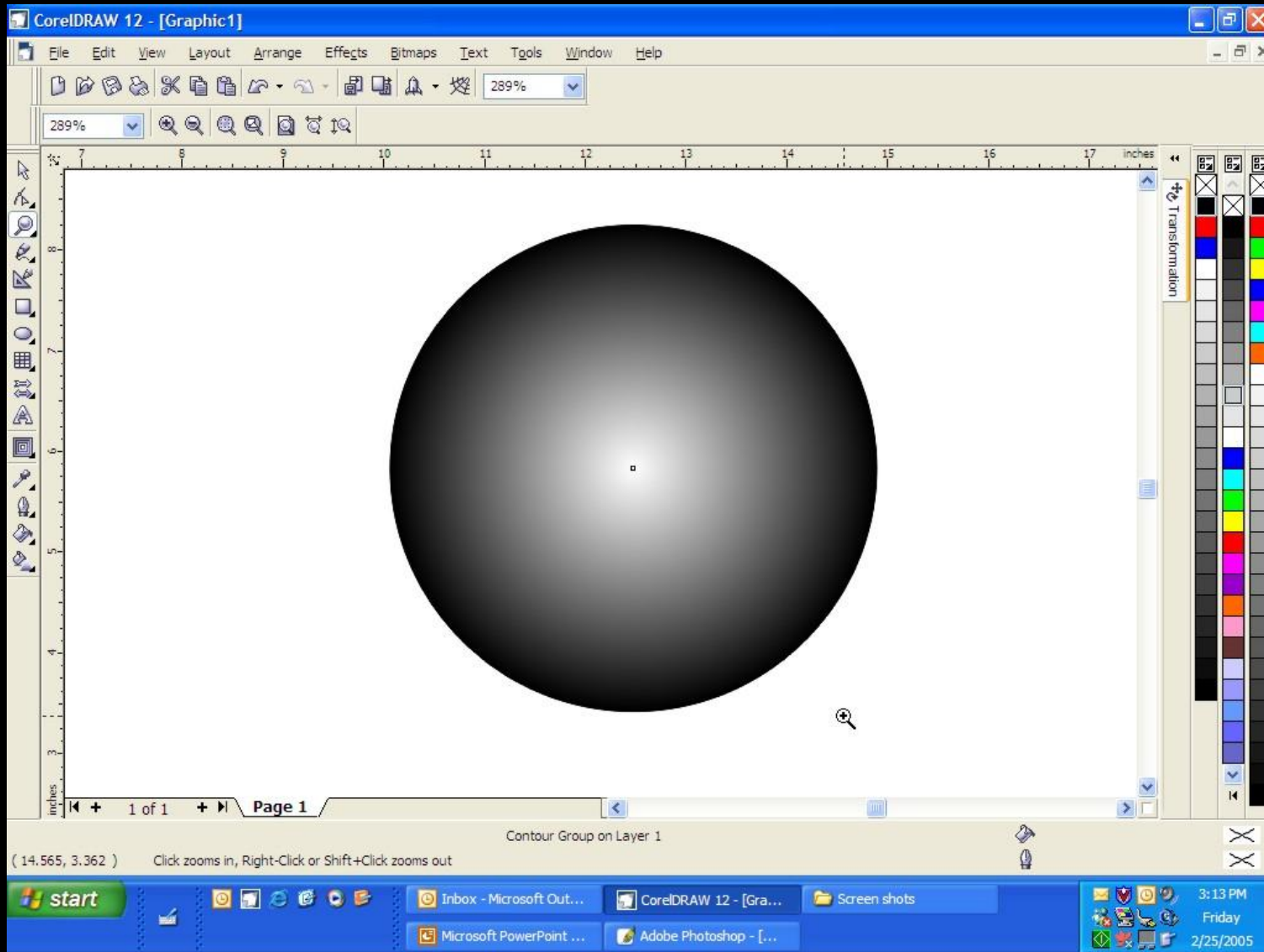


# Select "To Center" to Contour

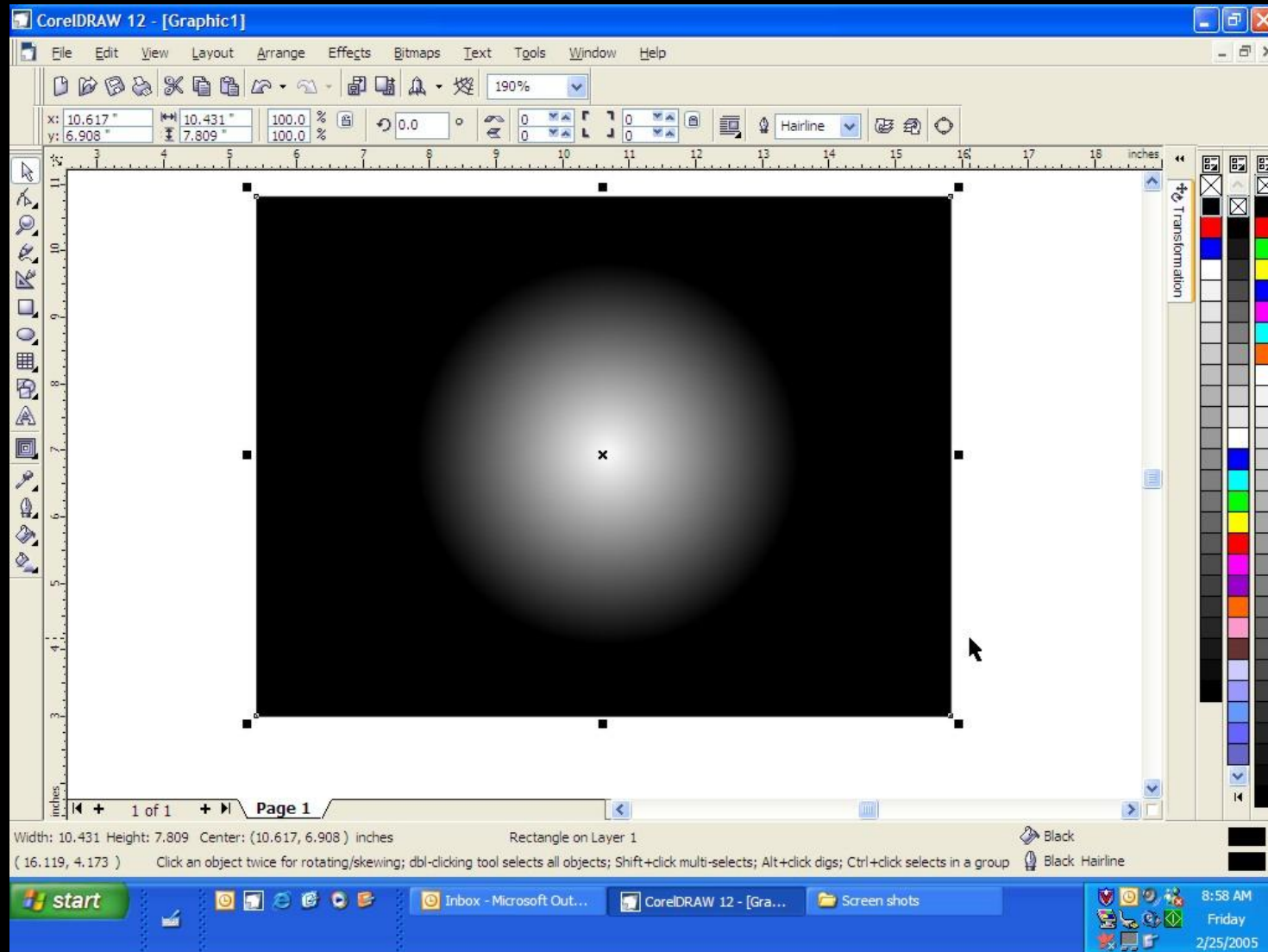
To Center



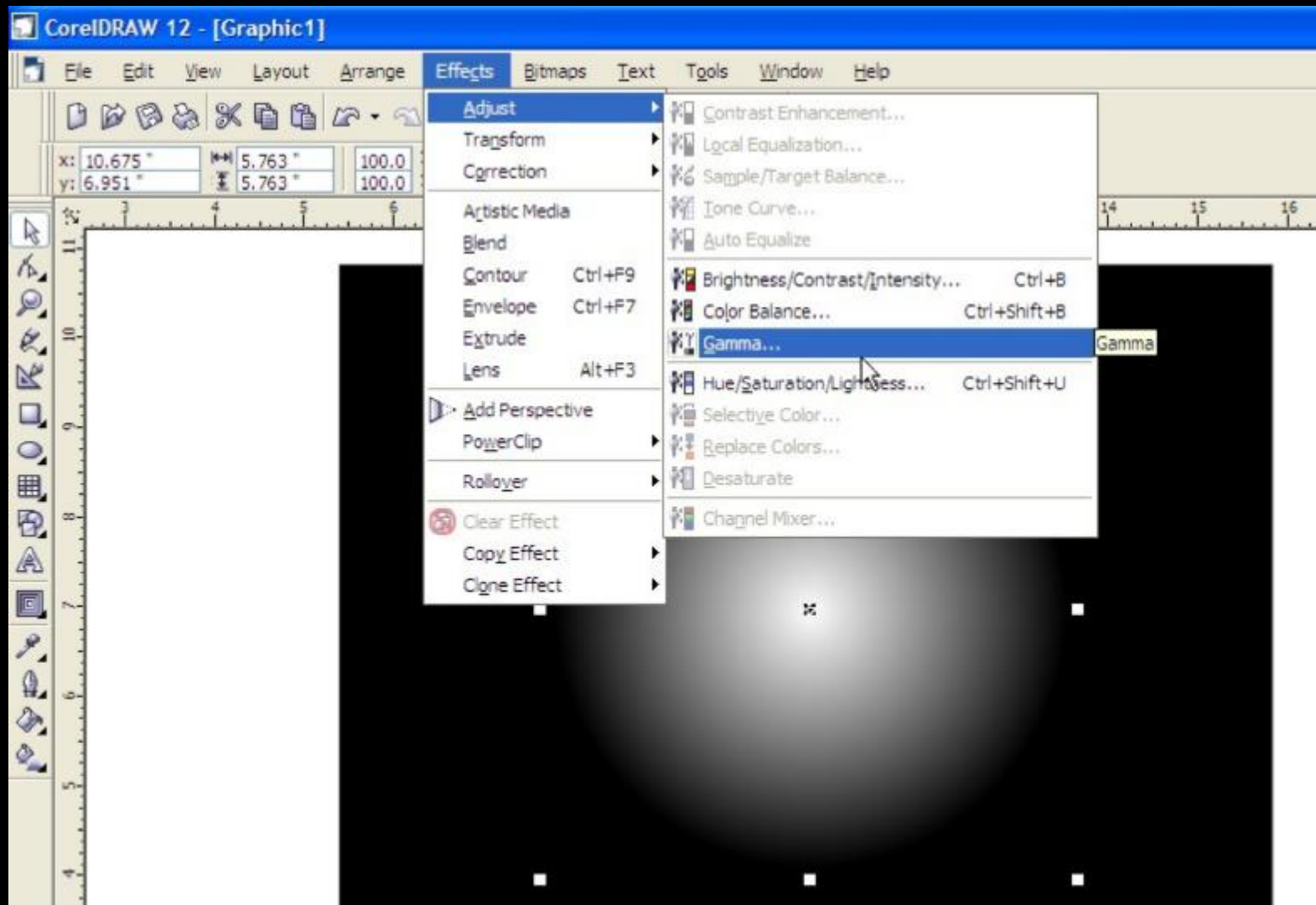
# Corel will Contour Outline



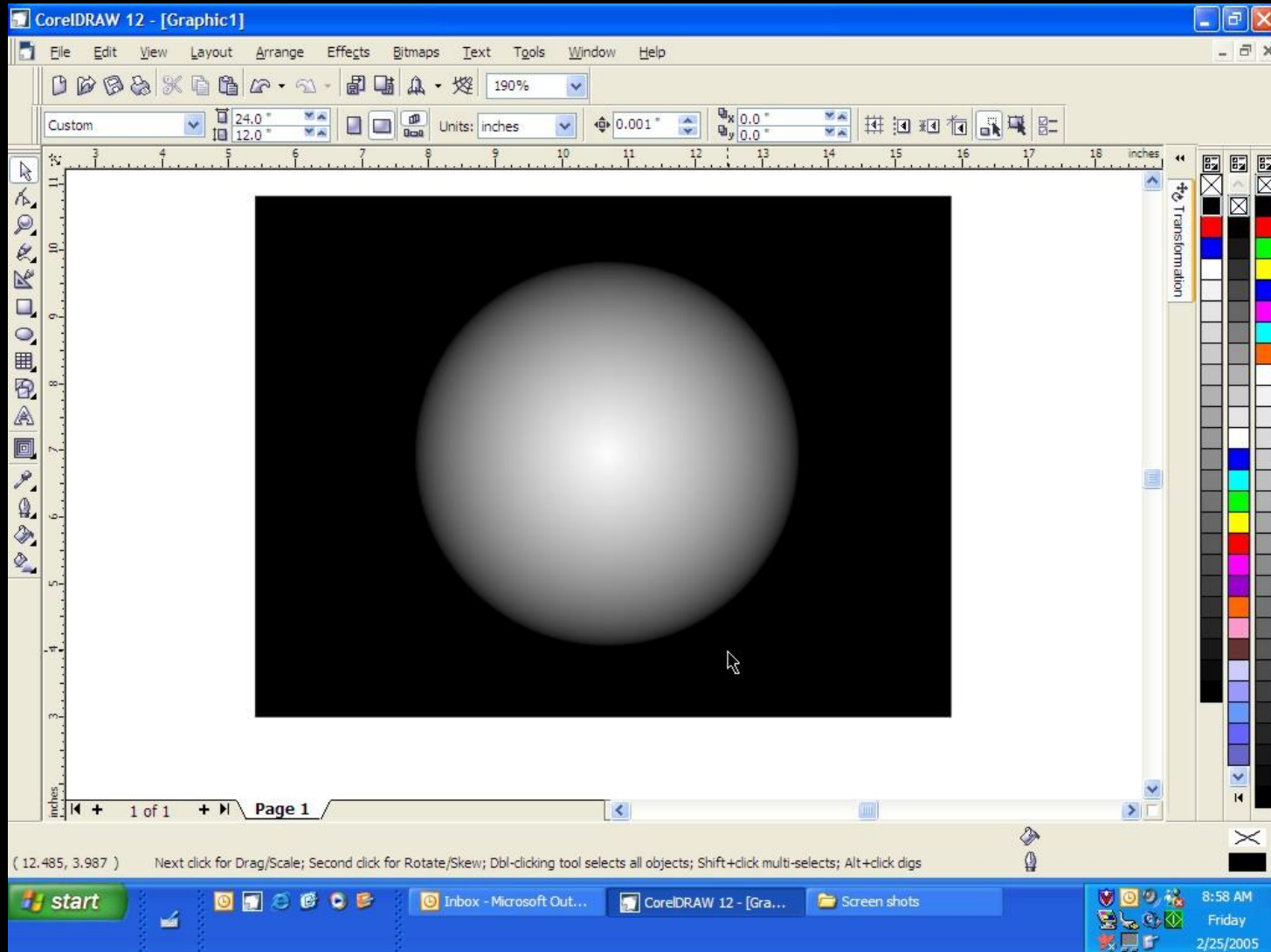
# Add a Black Backing



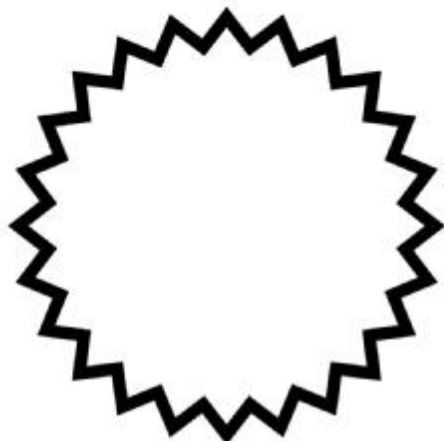
# Increase Gamma for less depth in thinner woods



# Gamma Corrected for Different Angles Curves and Depths of Engraving (If Necessary)



# Repeat Process for any Outline Shape



**Text**

The logo for Universal Laser Systems Inc. is centered within a white rectangular area. It consists of a black horizontal oval. Inside the oval, the word "UNIVERSAL" is written in a large, bold, white, sans-serif font. Below it, the words "LASER SYSTEMS INC." are written in a smaller, white, sans-serif font, with each word separated by a space.

**UNIVERSAL**  
LASER SYSTEMS INC.

# Vectorized Logos

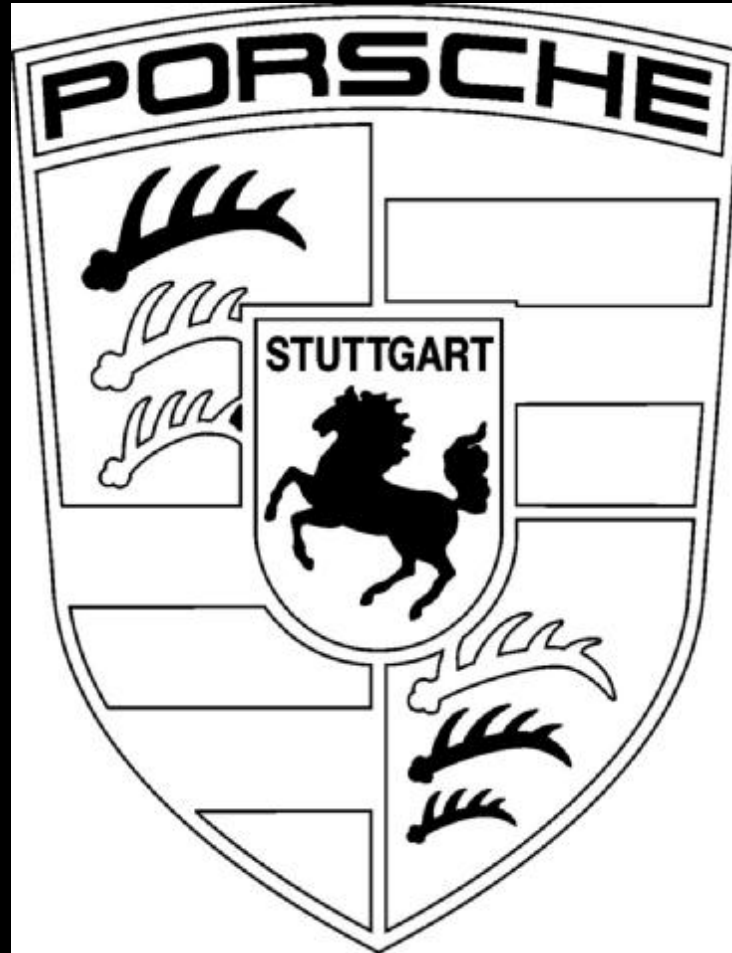


- **Clipart Type Logo**



- **Converted to 3D**

# EXAMPLE LOGO



**Converted to 3D**



# Engraved in a Maple Plaque



## 3D Tips:

- After you make a 3D image Convert to a 600 DPI Grayscale Bitmap by selecting the image, Selecting the dropdown menu “Bitmaps” then “Convert to Bitmap”.
- Engrave the image multiple times until desired depth is reached.